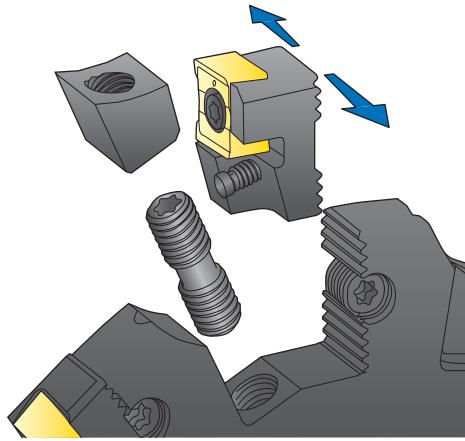
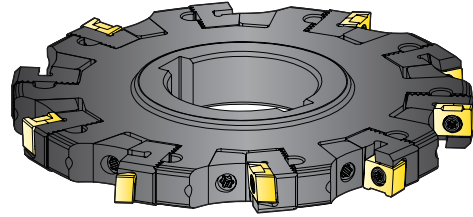
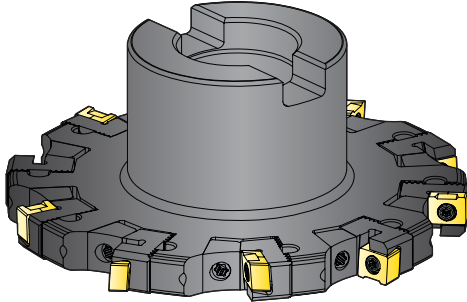




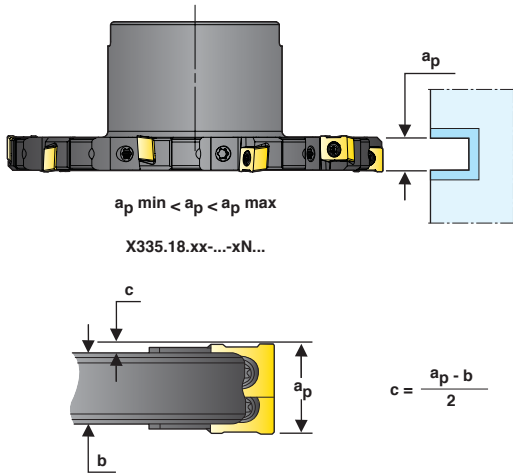
WWW.SECOTOOLS.COM



SECO DISC MILL - ADJUSTMENT INSTRUCTION

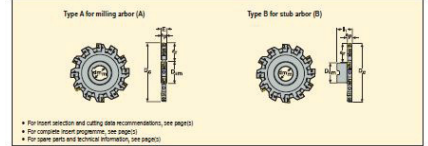


N



Disc milling cutters

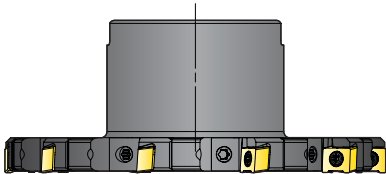
Cutter 335 18 - Insert LMK. Width 13-15 mm - full width - Adjustable design



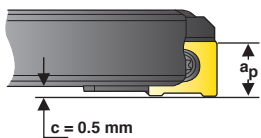
Part No.	Type of tool	Dimensions in mm										Z ₁	Z ₂	Z ₃	Z ₄	Z ₅	Z ₆	Z ₇	Z ₈	Z ₉	Z ₁₀	Z ₁₁	Z ₁₂	Z ₁₃	Z ₁₄	Z ₁₅	Z ₁₆	Z ₁₇	Z ₁₈	Z ₁₉	Z ₂₀	Z ₂₁	Z ₂₂	Z ₂₃	Z ₂₄	Z ₂₅	Z ₂₆	Z ₂₇	Z ₂₈	Z ₂₉	Z ₃₀	Z ₃₁	Z ₃₂	Z ₃₃	Z ₃₄	Z ₃₅	Z ₃₆	Z ₃₇	Z ₃₈	Z ₃₉	Z ₄₀	Z ₄₁	Z ₄₂	Z ₄₃	Z ₄₄	Z ₄₅	Z ₄₆	Z ₄₇	Z ₄₈	Z ₄₉	Z ₅₀	Z ₅₁	Z ₅₂	Z ₅₃	Z ₅₄	Z ₅₅	Z ₅₆	Z ₅₇	Z ₅₈	Z ₅₉	Z ₆₀	Z ₆₁	Z ₆₂	Z ₆₃	Z ₆₄	Z ₆₅	Z ₆₆	Z ₆₇	Z ₆₈	Z ₆₉	Z ₇₀	Z ₇₁	Z ₇₂	Z ₇₃	Z ₇₄	Z ₇₅	Z ₇₆	Z ₇₇	Z ₇₈	Z ₇₉	Z ₈₀	Z ₈₁	Z ₈₂	Z ₈₃	Z ₈₄	Z ₈₅	Z ₈₆	Z ₈₇	Z ₈₈	Z ₈₉	Z ₉₀	Z ₉₁	Z ₉₂	Z ₉₃	Z ₉₄	Z ₉₅	Z ₉₆	Z ₉₇	Z ₉₈	Z ₉₉	Z ₁₀₀
		Z ₁	Z ₂	Z ₃	Z ₄	Z ₅	Z ₆	Z ₇	Z ₈	Z ₉	Z ₁₀																																																																																																				
X335.18 - 080-1410-01-00	12-15	80	102.8	217	48	80	-	8	3	0.7	1000	LMK18																																																																																																			
X335.18 - 100-1410-01-00	12-15	100	120.8	217	48	80	-	8	4	0.9	800	LMK18																																																																																																			
X335.18 - 125-1410-01-00	12-15	125	145.8	217	48	80	-	8	4	0.9	800	LMK18																																																																																																			
X335.18 - 150-1410-01-00	12-15	150	170.8	217	48	80	-	8	4	0.9	800	LMK18																																																																																																			
X335.18 - 175-1410-01-00	12-15	175	195.8	217	48	80	-	8	4	0.9	800	LMK18																																																																																																			
X335.18 - 200-1410-01-00	12-15	200	220.8	217	48	80	-	8	4	0.9	800	LMK18																																																																																																			
X335.18 - 225-1410-01-00	12-15	225	245.8	217	48	80	-	8	4	0.9	800	LMK18																																																																																																			
X335.18 - 250-1410-01-00	12-15	250	270.8	217	48	80	-	8	4	0.9	800	LMK18																																																																																																			
X335.18 - 275-1410-01-00	12-15	275	295.8	217	48	80	-	8	4	0.9	800	LMK18																																																																																																			
X335.18 - 300-1410-01-00	12-15	300	320.8	217	48	80	-	8	4	0.9	800	LMK18																																																																																																			
X335.18 - 325-1410-01-00	12-15	325	345.8	217	48	80	-	8	4	0.9	800	LMK18																																																																																																			
X335.18 - 350-1410-01-00	12-15	350	370.8	217	48	80	-	8	4	0.9	800	LMK18																																																																																																			
X335.18 - 375-1410-01-00	12-15	375	395.8	217	48	80	-	8	4	0.9	800	LMK18																																																																																																			
X335.18 - 400-1410-01-00	12-15	400	420.8	217	48	80	-	8	4	0.9	800	LMK18																																																																																																			
X335.18 - 425-1410-01-00	12-15	425	445.8	217	48	80	-	8	4	0.9	800	LMK18																																																																																																			
X335.18 - 450-1410-01-00	12-15	450	470.8	217	48	80	-	8	4	0.9	800	LMK18																																																																																																			
X335.18 - 475-1410-01-00	12-15	475	495.8	217	48	80	-	8	4	0.9	800	LMK18																																																																																																			
X335.18 - 500-1410-01-00	12-15	500	520.8	217	48	80	-	8	4	0.9	800	LMK18																																																																																																			
X335.18 - 525-1410-01-00	12-15	525	545.8	217	48	80	-	8	4	0.9	800	LMK18																																																																																																			
X335.18 - 550-1410-01-00	12-15	550	570.8	217	48	80	-	8	4	0.9	800	LMK18																																																																																																			
X335.18 - 575-1410-01-00	12-15	575	595.8	217	48	80	-	8	4	0.9	800	LMK18																																																																																																			
X335.18 - 600-1410-01-00	12-15	600	620.8	217	48	80	-	8	4	0.9	800	LMK18																																																																																																			
X335.18 - 625-1410-01-00	12-15	625	645.8	217	48	80	-	8	4	0.9	800	LMK18																																																																																																			
X335.18 - 650-1410-01-00	12-15	650	670.8	217	48	80	-	8	4	0.9	800	LMK18																																																																																																			
X335.18 - 675-1410-01-00	12-15	675	695.8	217	48	80	-	8	4	0.9	800	LMK18																																																																																																			
X335.18 - 700-1410-01-00	12-15	700	720.8	217	48	80	-	8	4	0.9	800	LMK18																																																																																																			
X335.18 - 725-1410-01-00	12-15	725	745.8	217	48	80	-	8	4	0.9	800	LMK18																																																																																																			
X335.18 - 750-1410-01-00	12-15	750	770.8	217	48	80	-	8	4	0.9	800	LMK18																																																																																																			
X335.18 - 775-1410-01-00	12-15	775	795.8	217	48	80	-	8	4	0.9	800	LMK18																																																																																																			
X335.18 - 800-1410-01-00	12-15	800	820.8	217	48	80	-	8	4	0.9	800	LMK18																																																																																																			
X335.18 - 825-1410-01-00	12-15	825	845.8	217	48	80	-	8	4	0.9	800	LMK18																																																																																																			
X335.18 - 850-1410-01-00	12-15	850	870.8	217	48	80	-	8	4	0.9	800	LMK18																																																																																																			
X335.18 - 875-1410-01-00	12-15	875	895.8	217	48	80	-	8	4	0.9	800	LMK18																																																																																																			
X335.18 - 900-1410-01-00	12-15	900	920.8	217	48	80	-	8	4	0.9	800	LMK18																																																																																																			
X335.18 - 925-1410-01-00	12-15	925	945.8	217	48	80	-	8	4	0.9	800	LMK18																																																																																																			
X335.18 - 950-1410-01-00	12-15	950	970.8	217	48	80	-	8	4	0.9	800	LMK18																																																																																																			
X335.18 - 975-1410-01-00	12-15	975	995.8	217	48	80	-	8	4	0.9	800	LMK18																																																																																																			
X335.18 - 1000-1410-01-00	12-15	1000	1020.8	217	48	80	-	8	4	0.9	800	LMK18																																																																																																			

Please check availability in current price and stock list. Adjustable cutter may be ordered with the cutting width set to any value within its range, see page for more info. All cutters are made to the minimum order width, ± 0.02 mm.

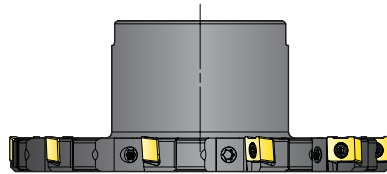
R



x335.xx-...-xR...



L



x335.xx-...-xL...

